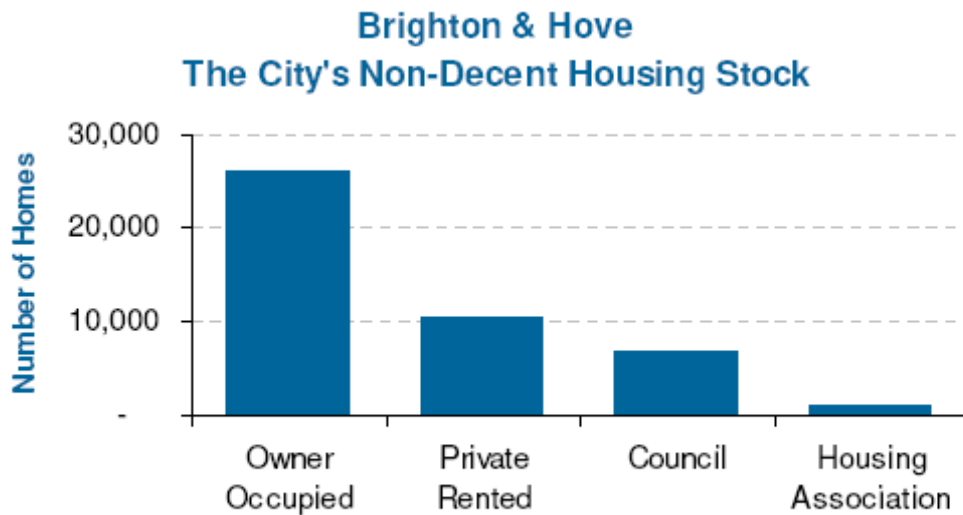


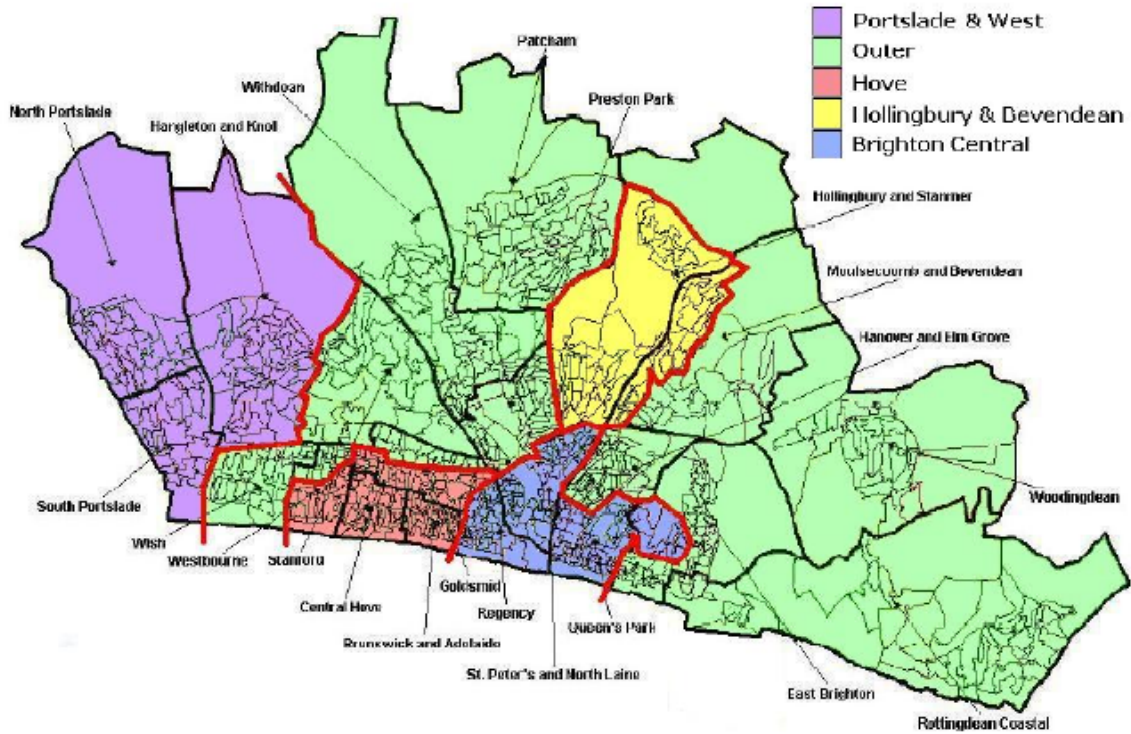
## Decent Homes

Overall, around 36% of the city's housing stock is considered to be non-decent. The highest proportion of non-decent housing is in the council housing stock, however, 85% of non-decent homes are in the private sector, outnumbering non-decent council homes by 5 to 1.



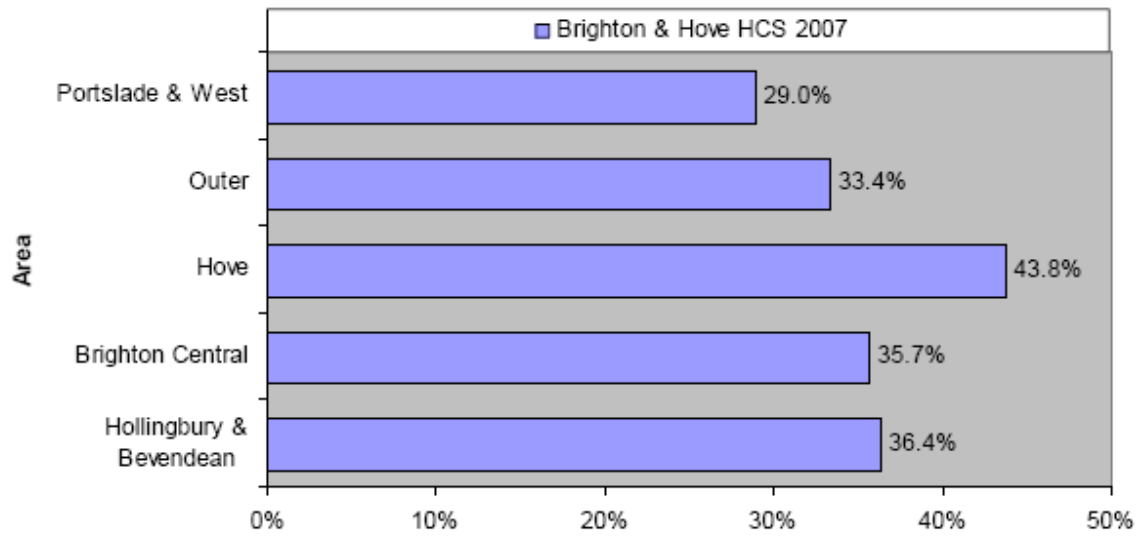
*Source: House Condition Survey 2008*

Decent homes data is not available at ward level, but at five areas in the city shown below with ward boundaries marked.



The distribution of non-decent dwellings by sub-area is shown in the next figure. The highest score is recorded in the Hove sub-area 43.8%, which has the highest proportions of three of the criteria (Category 1 hazards (24.6%), non modern facilities (7.4%) and thermal comfort failure (43.8%) with repairs having the second highest rate at 8.5%). The next highest rate is for the Hollingbury & Bevendean sub-area (36.4%). The lowest rate of non decency is for the Portslade & West sub-area at 29%.

## Non-decent dwellings by sub area



Source: 2007 House Condition Survey